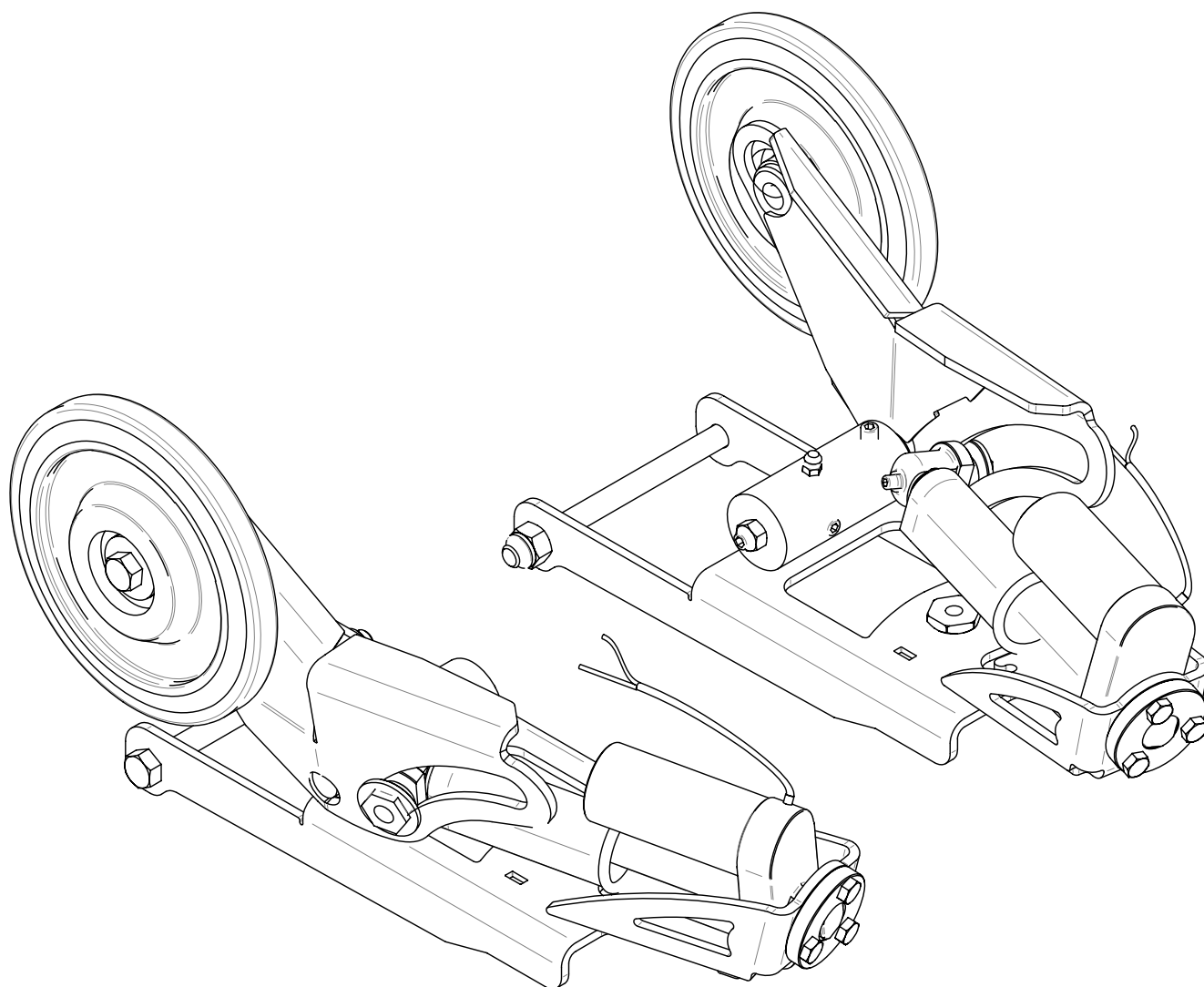


Les Fabrications TJD

Rivière-du-Loup

Québec, Canada

G5R 5X9



### SNOWMOBILE WHEELS

Les Fabrications TJD

Copyright Les Fabrications TJD, Rivière-du-Loup. No copy or reproduction of this manual, in whole or in parts, may be made without the explicit assent of Les Fabrications TJD.

## WELCOME

Congratulations! You've purchased a revolution in the field of the snowmobile skis. The SkiWheels Electric kit of Les Fabrications TJD.

Excellent to reduce wear on carbide runners and to facilitate the control of your snowmobile on hard or non-slip surfaces, The wheels SW Electric are the solution.

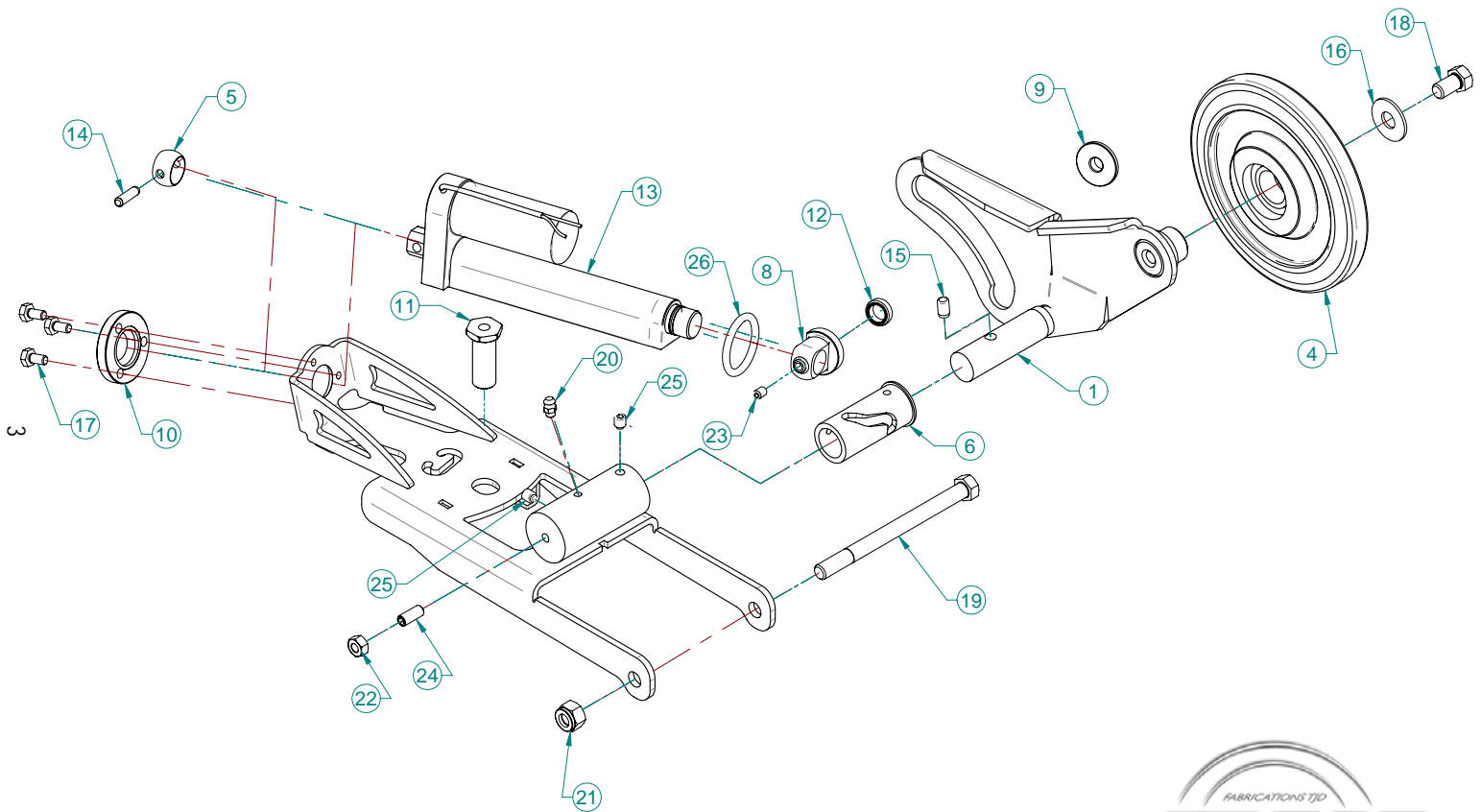
Driving to the gaz station will be now a pleasure thanks to the increased control and the reduced turning radius. In the same way, crossing roads will not cause any more problems and danger. You only have to lower the wheels when you arrive at a road, **no need to stop**, and raise them when you are done. The SW Electric will make it easier to put the snowmobile in the garage or to load your snowmobile in a trailer, by eliminating the friction caused by the skis on the ground.

It's up to you now to take full advantage of the benefits offered by the SW Electric.

Thank you for your trust in Les Fabrications TJD, have nice rides!



## EXPLODED VIEW OF THE SNOWMOBILE WHEELS



## **SNOWMOBILE WHEELS INSTALLATION**

### Part list

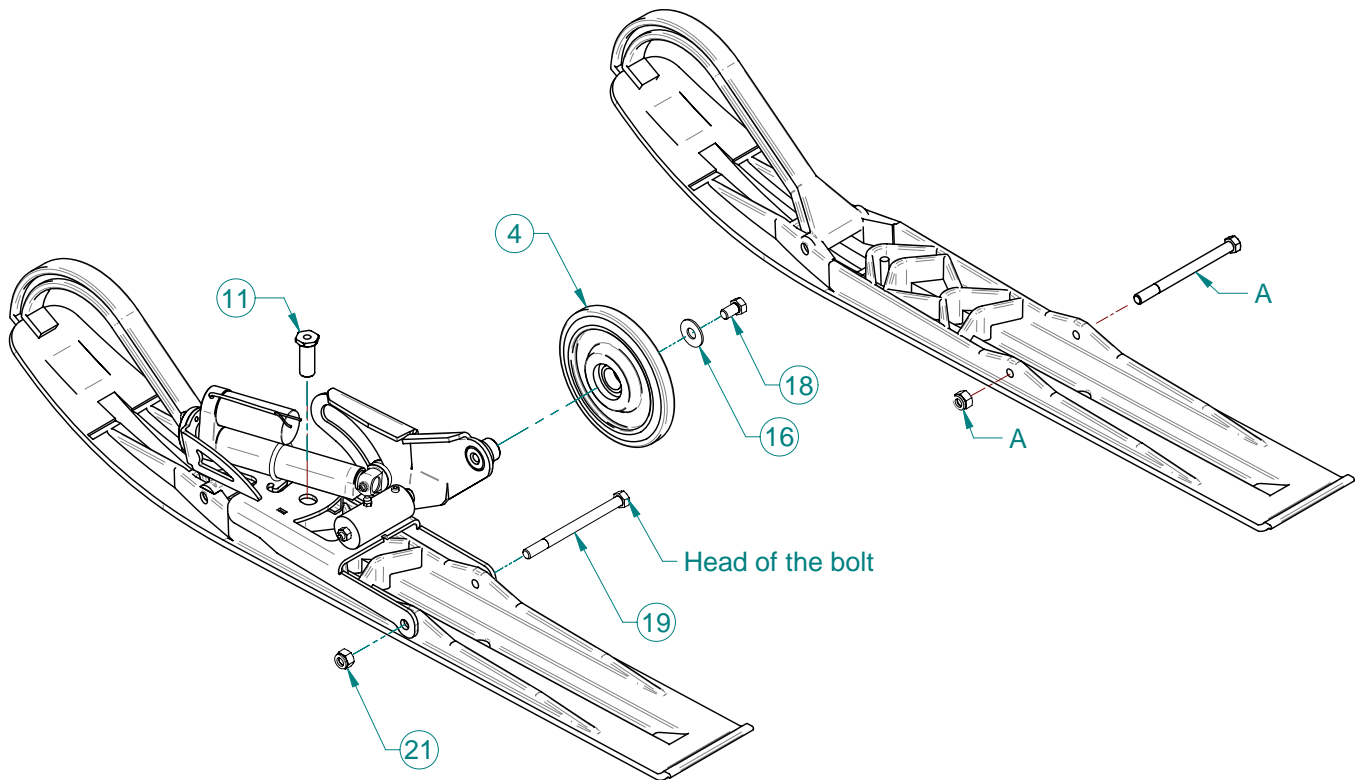
Ref.	Description	Item # (OEM)	Qty.
1	Welded Assembly - Right side wheel Bracket	00BR-015D	1
2	Right side main support; welded	00SU-015D	1
3	Left side main support ; welded	00SU-015G	1
4	UHMW Wheel, 3.5" diameter	02RO-001	2
5	Sphere	04AR-021	2
6	Right Side slotted Bushing	04Ar-022D	1
7	Left Side Slotted Bushing	04AR-022G	1
8	Cylinder end	04AR-023	2
9	Tightening washer	04AR-024	2
10	Washer with 3 holes	04AR-025	2
11	Threaded bushing	04AR-027	1
12	Spacing bushing	04DO-007	2
13	Actuator IMP3-12-30A-100-IP65 with 5FT cable	ACTUEUR_IMD3	2
14	Dowel Pin 1/4" x 1"	DP-1/4x1	2
15	Dowel Pin 5/16" x 1/2"	DP5/16x1/2	2
16	Flat washer 7/16" USS white zinc	FW-7/16-USS	2
17	Hexagonal Bolt 1/4"-20 NC x 1/2"	HB-1/4-20NCx1/2	6
18	Hexagonal Bolt 7/16"-14 NC x 3/4"	HB-7/16-14NCx3/4	2
19	Hexagonal bolt 7/16-14NC x 5-1/2"	HB-7/16-14NCx5-1/2	2
20	Hydraulic Grease Fitting 1/4"-28NFx35/64	HGH-1/4-28NFx35/64	2
21	Hexagonal locknut with nylon 7/16"-14NC	HLN-7/16-14NC	2
22	Hexagonal Nut 5/16"-18 NC	HN-5/16-18NC	2
23	Hex. Socket Set Screw Flat Point 1/4"-28NF x 3/8"	HSSSFP-1/4-28NFx3/8	2
24	Hex. Socket Set Screw Flat Point 5/16"-18NC x 1"	HSSSFP-5/16-18NCx1	2
25	Hex. Socket Set Screw Half Dog 5/16"-18NC x 5/32"	HSSSHD-5/16-18NCx5/32	4
26	O-Ring # 325	OR-324	2



## **SNOWMOBILE WHEELS INSTALLATION**

### **Right side assembly**

- 1- Remove the bolt and the nut of the main pivot (A) at the center of the skis.
  - 2- Assemble the **right side kit** on the **right ski** and the **left side kit** on the **left ski** using the bolts and of the nuts that came with the module.
    - Install the 7/16" x 5-1/2" (19) bolt and 7/16" locknut (21) to replace the bolt and the nut (A) removed from the main pivot.
- Note : Make sure to insert the head of the bolt on the same side as the wheel in order to avoid interference.
- Install the threaded bushing (11) on the threaded rod of the carbide runners and tighten (put threadlocker on the threads (Loctite)). You might have to activate the actuator to have enough space to insert the bushing.
- 3- Add item 4 (wheel) using the items 16 and 18. (put threadlocker on the threads (Loctite)).



### **RIGHT SIDE SKI**

Figure A

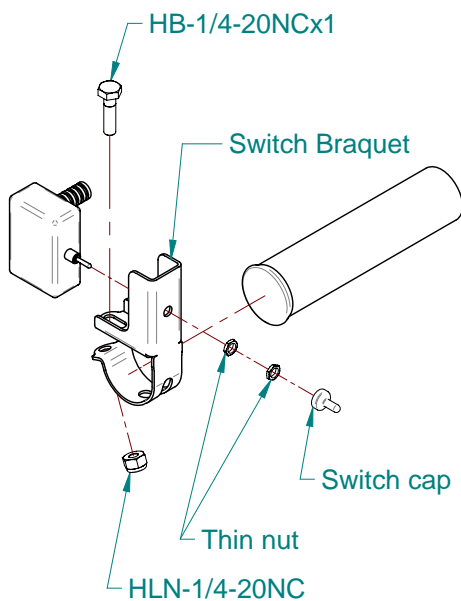


# **SNOWMOBILE WHEELS INSTALLATION**

## **Electrical connection**

- 1- Assemble the switch on the switch bracket with one of the two thin nuts. Insert the other nut into the cover of the switch cap, a lip is made for that in the cap, and screw it.
- 2- Tighten the bracket on the handle of the snowmobile with a 1/4-20NC X 1 bolt and one nylon 1/4-20NC nut.
- 3- Attach the wires using tie wraps (not shown) on the structure of the snowmobile. Make sure to locate the wires so that there is no risk to damage them.
- 4- Connect the red wires of the cylinders together and connect them to the yellow wire of the switch (as shown) using the connectors.
- 5- Connect the two black wires of the cylinders together and connect them to the green wire of the switch (as shown) using the connectors.
- 6- Connect the positive terminal of the battery to the red wire of the switch (as shown) using the connectors.
- 7- Connect the negative terminal of the battery to the black wire of the switch (as shown) using the connectors.

### **Steps 1 to 3**



### **Steps 4 to 7**

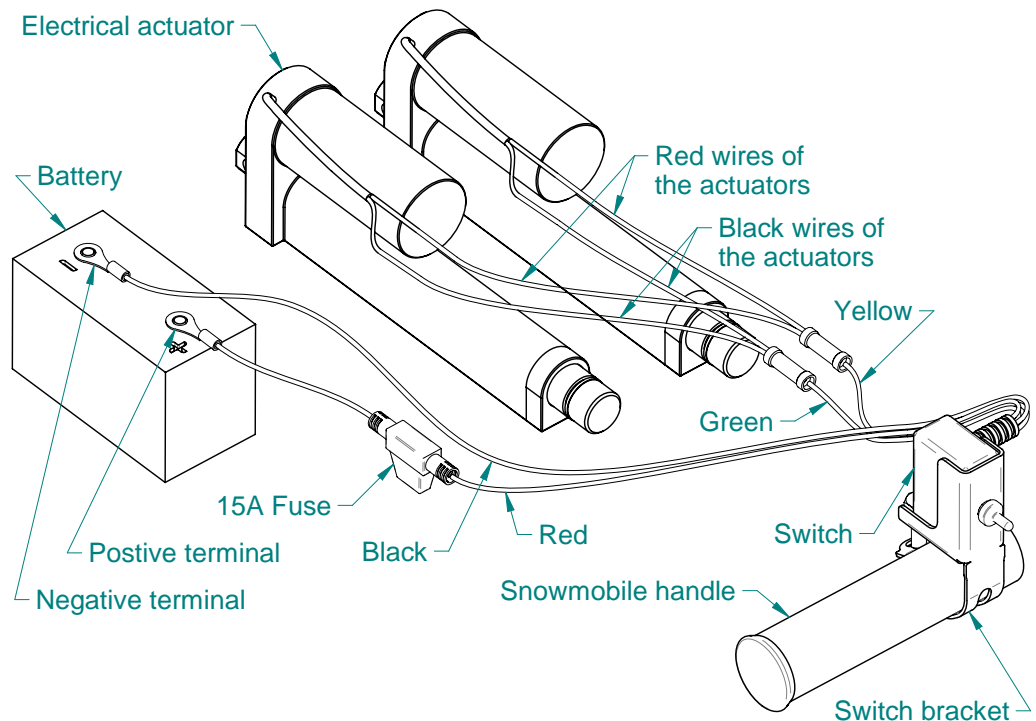


Figure B



## **MAINTENANCE**

Each 50 cycles, make sure that the mechanism is well lubricated. Lubricate with grease formulated for temperatures below -40 degrees Celcius (-40 degrees Fahrenheit).

**Important : Grease the mecanism when the actuators are retracted in order to avoid a surplus of grease which could damage the actuators.**

## **WARNING AND SAFETY**



- 1- Read the safety and operation recommendations in your snowmobile owner's manual. This safety information also applies to your snowmobile when equipped with ski wheels.
- 2- When the wheels are lowered, circulate at a maximum speed of 10km/h.
- 3- When the wheels are lowered do not takes a jump with the snowmobile, it could damage the mecanism.
- 4- When the wheels are lowering, make a visual check of the movement of the mechanism to make sure that nothing is blocking the mechanism (a branch or ice for exemple).
- 5- The wheels kit is intended to be used with the manufacturer parts of the snowmobile (carbide runners and ski for exemple).

