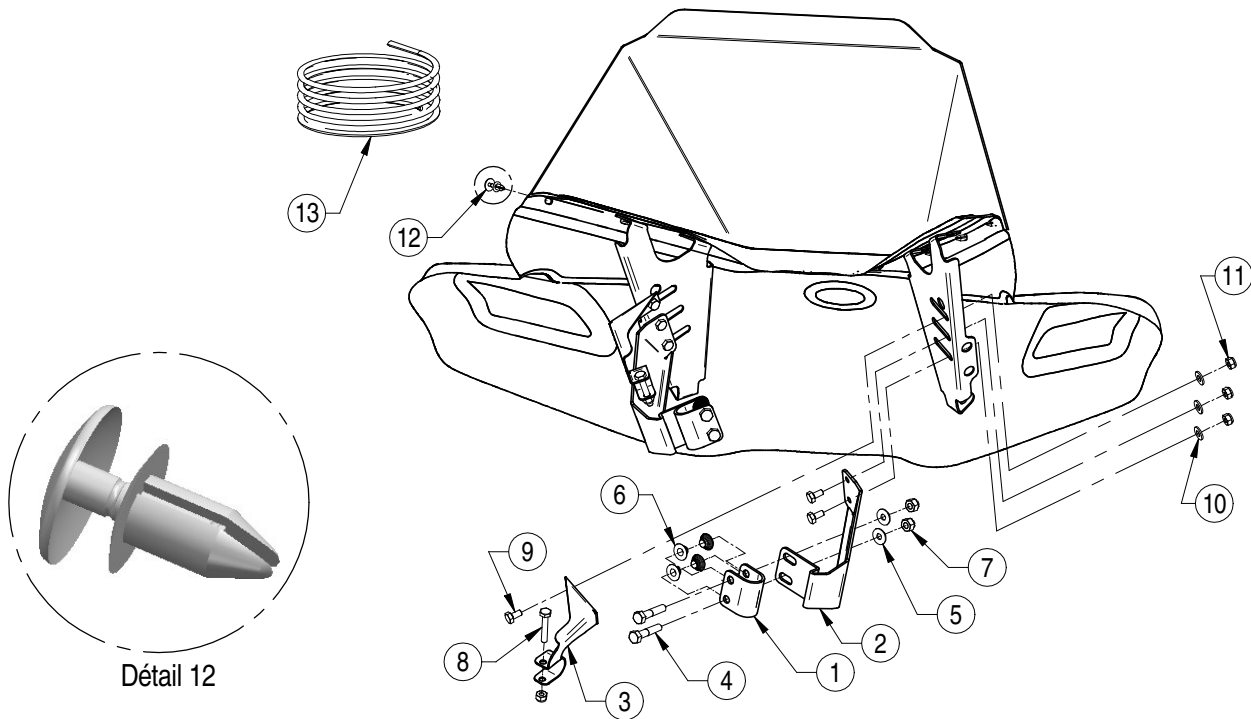




INSTALLATION FAIRING BRACKET 10

1. Install the fairing according to drawing below.
2. Install the window with item 12.
3. Before to install fairing, pull out the front plastic of the handlebar, cut the ties of electrical cables and unscrew the both screws of the top of the rear plastic to easier assemblage.
 Note : Look at the picture before to begin the installation.
4. Install item 1 on the handles of ATV using items 4, 6, 2, 5 and 7 without tightening.
5. Install item 3 closer as possible of ATV's handles using items 8 and 11 without tightening.
 Note : Verify if you have space necessary to the correct operation of the handbrake lever.
6. Install fairing using items 9, 10 and 11 without tightening.
7. Adjust the position of all items, and make sure that bracket 04WA-010 will closer as possible of rear plastic of handle.
8. Make sure to tight sufficiently the bolts to avoid disarrangement cause by vibration.
9. Verify the clearing of the fairing by turning the handlebar. Make sure to clear the gear shift and other accessories installed close to the handlebar of the vehicle.

IMPORTANT : Ensure you to keep space necessary to the correct operation of the handbrake lever.



Ref.	Description	Part #	Qty.
1	Support of handle	04WB-001A	2
2	Angles of fairing right and left	04WA-010D & 04WA-010G	2
3	Support of handle	04WB-005D et 04WB-005G	2
4	Bolt 5/16 x 1 ½ white zinc	BH 5/16x1 1/2	4
5	Washer ¼ USS white zinc	W 1/4USS Zinc B	4
6	Casing of support fairing	04BB-001	8
7	Nylon insert lock nut 5/16 white zinc	NJ 5/16	4
8	Bolt 1/4 x 1 ½ white zinc	Bolt 1/4x1 1/2	2
9	Bolt 1/4 x 1/2 white zinc	BH 1/4x1/2	6
10	Washer 1/4 SAE white zinc	W ¼ SAE ZINC BLANC	6
11	Nylon insert lock nut 1/4 white zinc	NJ 1/4	8
12	Pushbutton to retain window	Bouton17.5MM	8
13	2600 mm of trim 8mm (available upon request)	TRIM8MM-coupe 2600	option



INSTALLATION FAIRING BRACKET 10

Installation picture

